

**SECTION 6  
LANDSCAPING**

## 6. LANDSCAPING

Landscape architectural guidelines are given to promote a consistent and congruous environment throughout the open spaces, both public and private, between the buildings, roads and other structures

### 6.1 PLANTING

- Planting must reflect the characteristics of the natural vegetation of the region in texture, colour and form.
- All basic planting to make primary use of green, with flowers forming incidental colour.
- Use of intensive colour to be sensitively structured
- Only species indigenous to the region may be planted. See Planting Palette in section 6.5.
- Form manipulation, through standard formation of naturally multi-stemmed species, etc. is not permitted, although topiaring in the form of hedges is permissible.

#### Pedestrian areas:

- Planting along pedestrian walkways, terraces, etc. to be of a human scale and intimate nature in terms of interest, texture, colour, etc.
- Armed species to be avoided along pedestrian surfaces.
- Trees should not cause thorny, woody or otherwise heavy detritus.

#### Parking areas:

- Where trees are selected to shade parking areas, the following criteria shall apply:
  - Tree roots not to interfere with paving, services, etc.
  - Trees not to produce damaging leaf, seed, branch, etc. detritus or gums.
  - Trees to be of suitable form, i.e. with no low branches.
  - Species to be selected from plant palette provided in section 6.5.



fig 6.1. Primary use of green.



fig 6.2. Use of incidental colour



fig 6.3. Active urban interfaces..

### 6.2 LANDSCAPING DESIGN PRINCIPLES

- The landscapes within the individual erven must respond to the architecture of the buildings and structures
- The landscape interface between erven and public space shall be designed with a sensitivity to continuity and integration of the natural vegetation.
- The landscape should be planned as a functional component of the overall development project being assigned uses, including recreation, entertainment, screening, buffering, etc., and should not simply be a foreground to the building / structure.
- Locate service areas, including composting facilities, tool stores, etc. away from views from the street.
- Locate active parts of landscape near to street interfaces without compromising privacy, safety and comfort of the users.

### 6.3 WATER

- Where a water feature includes a vertical water element, the horizontal element must extend to a minimum of five times the height of the vertical element.
- Water features should where practicable include stormwater attenuation. As such, provision must be made for litter traps and filtration.
- Chemically treated water features may not discharge into the stormwater system.

### 6.4 SLOPES

- No slopes to be vegetated shall be steeper than 1:3 vertical to horizontal.
- Slopes to be planted with species that will quickly and efficiently bind the soil and form a stable surface.
- Slopes steeper than 1:3 to be retained by engineered retaining walls.
- Retaining walls to respond to the architectural form guidelines as set out in section 5.

## 6.5 TERRACING

### Cut & Fill

Cut and fill shall be balanced such that an equal volume of material excavated is re-used as fill on the same site. Imported material will be permitted subject to consent by application lodged with the Architectural Review Committee.

The maximum height of fill shall not exceed 1.5m measured vertically above the natural ground level at any point.

The maximum depth of any cut shall not exceed 1.5m measured vertically below the natural ground level at any point.

### Retaining Walls

Retaining walls shall comprise Terraforce L15 Rockface concrete retaining blocks, colour 'Biscuit'. Retaining walls shall be a maximum of 1.5m high

### Terracing

Terracing shall be subject to the guidelines of cut & fill above.

The level platform of a stepped terrace formed from fill material shall have a horizontal dimension of at least 3 x the height above natural ground level of the fill comprising the terrace measured at the highest point of the terrace above natural ground level. Similarly, the level platform created from a cut shall have a horizontal dimension of at least 3 x the depth of the cut below natural ground level measured at the lowest point of the cut terrace below natural ground level.

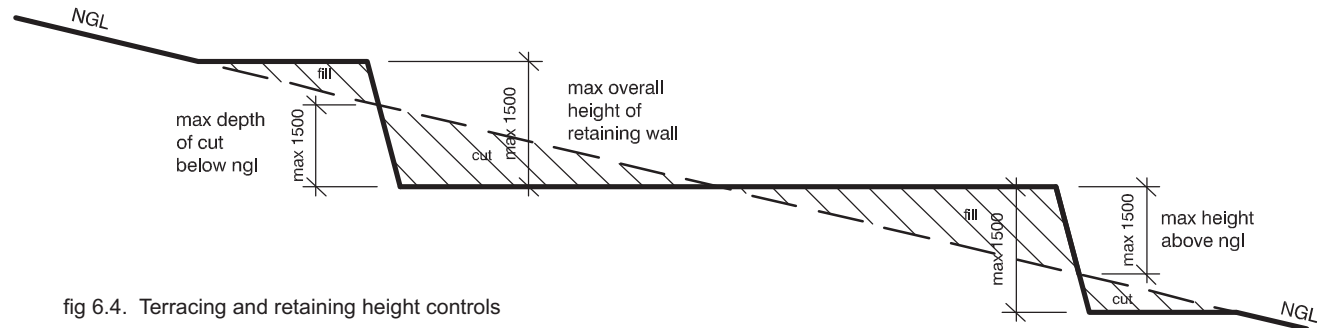


fig 6.4. Terracing and retaining height controls

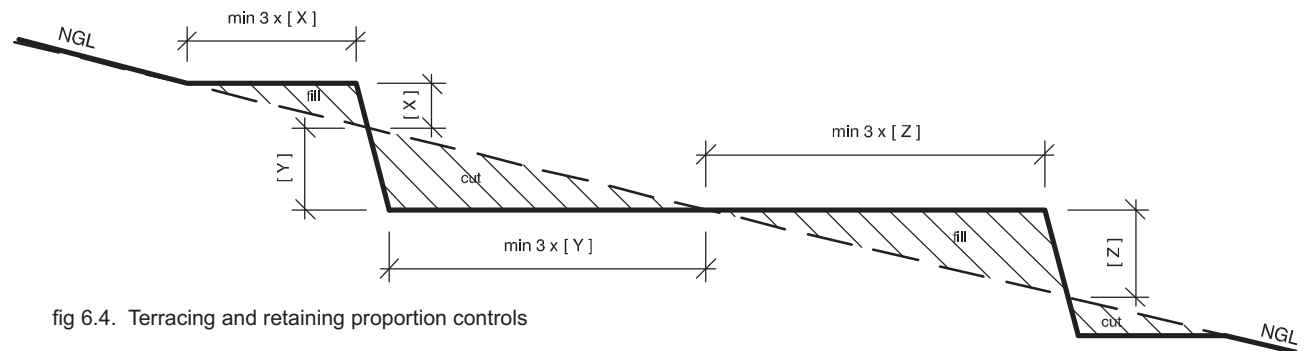


fig 6.4. Terracing and retaining proportion controls

## 6.5. PLANT PALETTE

The following plant palette has been devised, based on the existing plant species in the area, but also includes species for the general area which would be suited to the site. The palette includes species of trees, shrubs, groundcovers, geophytes, lawn and waterplants. This palette is merely a guide, and is not an exhaustive list of indigenous species permitted on the site.

### Trees:

*Acacia karroo*  
*Boscia oleoides*  
*Brachylaena discolor*  
*Buxus macowanii*  
*Calodendrum capense*  
*Calpurnia aurea*  
*Canthium inerme*  
*Clausena anisata*  
*Clerodendron glabrum*  
*Combretum caffrum*  
*Cussonia spicata*  
*Dovyalis rhamnoides*  
*Euclea crispa* subsp. *crispa*  
*Euphorbia triangularis*  
*Noltea africana*  
*Ochna arborea*  
*Olea capensis* subsp. *capensis*  
*Olea europaea* subsp. *africana*  
*Olinia ventosa*  
*Pappea capensis*  
*Pittosporum viridiflorum*  
*Polygala myrtifolia*  
*Psdrax obovata*  
*Pterocelastrus tricuspidatus*

*Rhus chirindensis*  
*Rhus pyroides* var. *pyroides*  
*Schotia afra* var. *afra*  
*Schotia latifolia*  
*Scolopia zeyheri*  
*Sideroxylon inerme*  
*Tarchonanthus camphoratus*  
*Virgilia oroboides*  
*Zanthoxylum capense*

### Shrubs:

*Acmadenia obtusa*  
*Acokanthera oppositifolia*  
*Agathosma apiculata*  
*Agathosma ovata*  
*Albuca fastigiata*  
*Allophylus decipiens*  
*Aloe africana*  
*Aloe ferox*  
*Aloe pluridens*  
*Aloe striata*  
*Anisodontea scabrosa*  
*Asparagus suaveolens*  
*Azima tetracantha*  
*Brachylaena ilicifolia*  
*Buddleja dysophylla*  
*Burchellia bubalina*  
*Buxus macowanii*  
*Cadaba aphylla*  
*Carissa bispinosa*  
*Carissa haematocarpa*  
*Cassine maritima*  
*Chrysanthemoides monilifera* subsp. *rotundata*  
*Clausena anisata*  
*Coleonema pulchellum*  
*Colpoon compressum*  
*Cotyledon orbiculata* var. *orbiculata*  
*Cotyledon velutina*  
*Crassula ovata*

*Crotalaria capensis*  
*Cyclopia pubescens*  
*Diospyros dichrophylla*  
*Disparago ericoides*  
*Dovyalis rhamnoides*  
*Ehretia hottentotica*  
*Ehretia rigida*  
*Erica cerinthoides* var. *cerinthoides*  
*Erica deliciosa*  
*Eriocephalus africanus*  
*Euclea natalensis*  
*Euclea racemosa*  
*Euclea schimperi* var. *schimperi*  
*Euclea undulata*  
*Eugenia capensis*  
*Euphorbia ledienii*  
*Euphorbia mauritanica* var. *mauritanica*  
*Freylinia undulata*  
*Gardenia thunbergii*  
*Gnidia styphelioides*  
*Grewia occidentalis*  
*Gymnosporia buxifolia*  
*Gymnosporia polyacantha*  
*Halleria lucida*  
*Hebenstraetia integrifolia*  
*Helichrysum teretifolium*  
*Hippobromus pauciflorus*  
*Hypoestes aristata* var. *aristata*  
*Indigofera denudata*  
*Indigofera sulcata*  
*Justicia capensis*  
*Justicia protracta*  
*Lycium cinereum*  
*Lycium ferocissimum*  
*Maerua cafra*  
*Maytenus procumbens*  
*Metalasia aurea*  
*Metalasia muricata*  
*Morella cordifolia* (= *Myrica cordifolia*)

*Morella quercifolia* (= *Myrica quercifolia*)  
*Mystroxyloa aethiopicum* subsp. *aethiopicum*  
*Nylandtia spinosa*  
*Ochna serrulata*  
*Olea exasperata*  
*Osteospermum junceum*  
*Passerina falcifolia*  
*Passerina obtusifolia*  
*Passerina rigida*  
*Pavetta revoluta*  
*Peristrophe cernua*  
*Phylica ericoides* var. *ericoides*  
*Phylica gnidioides*  
*Plectranthus fruticosus*  
*Plumbago auriculata*  
*Polygala myrtifolia*  
*Polygala virgata* var. *virgata*  
*Portulacaria afra*  
*Priestleya hirsuta*  
*Protea neriifolia*  
*Putterlickia pyracantha*  
*Rapanea gilliana*  
*Rhigozum obovatum*  
*Rhus crenata*  
*Rhus glauca*  
*Rhus incisa* var. *incisa*  
*Rhus lucida*  
*Rhus pallens*  
*Rhus undulata*  
*Salvia africana-lutea*  
*Scutia myrtina*  
*Selago corymbosa*  
*Stoebe plumosa*  
*Strelitzia juncea*  
*Sutera microphylla*  
*Sutherlandia frutescens*  
*Syncarpia paniculata*  
*Tarchonanthus camphoratus*  
*Tecomaria capensis*  
*Walafrida nitida*

*Zygophyllum morgsana*  
*Zygophyllum uitenhagense*

### Groundcovers:

*Acrolophia capensis*  
*Aloe humilis*  
*Andropogon appendiculatus*  
*Arctotheca populifolia*  
*Aristida diffusa* subsp. *burkei*  
*Aristida junciformis*  
*Asparagus densiflorus*  
*Asparagus striatus*  
*Berkheya angustifolia*  
*Brachiaria serrata*  
*Carpobrotus acinaciformis*  
*Carpobrotus deliciosus*  
*Carpobrotus edulis*  
*Chaetacanthus setiger*  
*Chironia baccifera*  
*Chironia melampyrifolia*  
*Chironia tetragona*  
*Chondropetalum microcarpum*  
*Crassula pellucida*  
*Crassula perfoliata*  
*Crassula spathulata*  
*Crassula vaginata*  
*Dasispermum suffruticosum*  
*Dianthus albens*  
*Drosanthemum hispidum*  
*Elegia filacea*  
*Eragrostis curvula*  
*Eragrostis racemosa*  
*Euphorbia bupleurifolia*  
*Euryops ericifolius*  
*Falckia repens*  
*Felicia amelloides*  
*Felicia echinata*  
*Felicia filifolia* subsp. *filifolia*  
*Felicia muricata* subsp. *muricata*  
*Fingerhuthia africana*  
*Gasteria bicolor*

*Gasteria croucheri*  
*Gazania krebsiana* subsp.  
*krebsiana*  
*Gazania rigens* var. *uniflora*  
*Geranium incanum*  
*Glottiphyllum haagii*  
*Glottiphyllum longum*  
*Helichrysum cymosum* subsp.  
*cymosum*  
*Helichrysum rosum*  
*Hermannia saccifera*  
*Hyparrhenia hirta*  
*Hypodiscus rigidus*  
*Hypoxis stellipilis*  
*Indigofera glaucescens*  
*Indigofera heterophylla*  
*Ischyrolepis eleocharis*  
*Jasminum angulare*  
*Juncus krausii*  
*Lampranthus spectabilis*  
*Leonotis ocymifolia*  
*Limonium scabrum*  
*Linum africanum*  
*Lobelia flaccida*  
*Melica decumbens*  
*Merxmuellera disticha*  
*Merxmuellera stricta*  
*Micranthus alopecuroides*  
*Oplismenus hirtellus*  
*Orthoptera coegana*  
*Osteospermum fruticosum*  
*Osteospermum imbricatum*  
 subsp. *imbricatum*  
*Othonna capensis*  
*Othonna rufibarbis*  
*Panicum ecklonii*  
*Pelargonium peltatum*  
*Pelargonium reniforme*  
*Pelargonium sidoides*  
*Plectostachys serpyllifolia*  
*Plectranthus madagascariensis*  
*Plumbago auriculata*

*Polygala ericaefolia*  
*Psoralea repens*  
*Scabiosa columbaria*  
*Scaevola plumieri*  
*Selago forbesii*  
*Senecio elegans*  
*Senecio quinquelobus*  
*Sporobolus iocladius*  
*Sporobolus virginicus*  
*Stachys aethiopica*  
*Sueda fruticosa*  
*Sutera campanulata*  
*Syncarpia recurvata*  
*Themeda triandra*  
*Ursinia chrysanthemoides*  
*Wahlenbergia undulata*  
*Zantedeschia aethiopica*

## Geophytes:

*Agapanthus praecox*  
*Ammocharis coraniaca*  
*Aristea ecklonii*  
*Babiana patersoniae*  
*Babiana sambucina*  
*Bobartia aphylla*  
*Bobartia orientalis*  
*Boophane disticha*  
*Brunsvigia gregaria*  
*Bulbine abyssinica*  
*Bulbine narscissifolia*  
*Chasmanthe aethiopica*  
*Chasmanthe floribunda*  
*Chlorophytum capense*  
*Crinum lineare*  
*Cyrtanthus obliquus*  
*Cyrtanthus sanguineus*  
*Cyrtanthus speciosus*  
*Cyrtanthus spiralis*  
*Dietes iridioides*  
*Eucomis autumnalis*  
*Haemanthus albiflos*

*Haemanthus coccineus*  
*Haemanthus sanguineus*  
*Hypoxis argentea*  
*Kniphofia uvaria*  
*Lanaria lanata*  
*Moraea spathulata*  
*Nerine undulata*  
*Ornithogalum dubium*  
*Ornithogalum thyrsoides*  
*Polyxena ensitifolia*  
*Scadoxus puniceus*  
*Spiloxene trifurcillata*  
*Tritonia dubia*  
*Tritonia lineata* var. *parvifolia*  
*Tulbaghia violacea*  
*Wachendorfia paniculata*  
*Watsonia angusta*  
*Watsonia knysnana*  
*Watsonia pillansii*

## Climbers:

*Asparagus subulatus*  
*Astephanus marginatus*  
*Behnia reticulata*  
*Capparis fascicularis* var.  
*zeyheri*  
*Capparis sepiaria* var. *citrifolia*  
*Clematis brachiata*  
*Cussonia thyrsoiflora*  
*Delairea odorata*  
*Dipogon lignosus*  
*Ipomoea cairica*  
*Jasminum angulare*  
*Lauridia tetragona*  
*Microloma tenuifolium*  
*Myrsiphyllum asparagoides*  
*Myrsiphyllum asparagoides*  
*Myrsiphyllum volubile*  
*Pelargonium peltatum*  
*Rhoicissus digitata*  
*Rhoicissus tridentata*

*Sarcostemma viminale*  
*Scutia myrtina*  
*Secamone alpini*  
*Senecio macroglossus*  
*Senecio quinquelobus*

## Lawn:

*Cynodon dactylon*

## Specimen & Interest plants:

*Adromiscus cristatus* var.  
*cristatus*  
*Aloe humilis*  
*Apodolirion macowanii*  
*Aristida junciformis*  
*Asparagus subulatus*  
*Bonatea speciosa*  
*Boophane disticha*  
*Crassula pyramidalis*  
*Eulophia aculeata* subsp.  
*Aculeata*

*Euphorbia bupleurifolia*  
*Fockea edulis*  
*Gladiolus maculatus* subsp.  
*meridionalis*  
*Miscanthus capensis*  
*Ornithogalum dubium*  
*Rhombophyllum rhomboideum*  
*Sarcostemma viminale*  
*Senecio pyramidatus*  
*Stapelia grandiflora*  
*Tritonia lineata* var. *parvifolia*  
*Wachendorfia paniculata*

## Water-related species:

*Aponogeton* sp.  
*Cyperus nataliensis*

*Cyperus obtusiflorus*  
*Diplachne fusca*  
*Ficinia bulbosa*  
*Ficinia involuta*  
*Ficinia lateralis*  
*Ficinia nigrescens*  
*Ficinia truncata*  
*Hemarthria altissima*  
*Imperata cylindrica*  
*Mariscus dregeanus*  
*Mariscus solidus*  
*Mariscus tabularis*  
*Mariscus uitenhagensis*  
*Miscanthus capensis*  
*Nymphaea nouchali* f. var.  
*caerulea*  
*Phragmites australis*  
*Pycnus polystachyos* var.  
*polystachyos*  
*Scirpus nodosus*  
*Scirpus thunbergianus*  
*Zantedeschia aethiopica*